



EPSON®

EXCEED YOUR VISION



PowerLite Home Cinema 3010/3010e

Firmware Version 113 Update Instructions

1 Operating Environment

1.1 Hardware Requirements

- A PC with; Windows 98SE / Windows Me / Windows 2000 / Windows XP with an available USB port. **(Note Windows Vista / 7, and Macintosh OS X are not supported)**

1.2 Software to install

- IDOL 3.05 firmware uploader utility (From FW 113 CD or package file)
- EMPUSB2Setup.exe (From FW 113 CD or package file)
- Firmware file V113 should be copied to the Desktop (From FW 113 CD or package file)

1.3 Applicable projectors

- Apply firmware version V113 as needed to all;
- PowerLite Home Cinema 3010/3010e series projectors
- Apply as needed for all units that have a previous version of firmware.

2 Notices:

Firmware update utility "IDOL Ver.3.05" must be used. The basic setup and usage of IDOL are provided in this document for this procedure.

3.1 Downloading

- (1) Copy the firmware file "HB1-L2-FWWWV113-r31251_AS.DLT" from the CD or package file to the Desktop.
- (2) Install the following applications from the CD or package file onto the host PC:
 - a. **IDOLV305_Installer.exe**
 - b. **EMPUSB2Setup.exe**

NOTE: Follow the on screen install instructions for both utilities. Use the default folder and install paths for the installation of the application, when prompted by the installer to create a new folder, always click **"Yes."**

- (3) On the back of the projector to the right of the "HDMI 2" port there is a mini-USB type B port



labeled "Service Only"



- (4) Connect a mini-USB cable from the PC to the projector.

NOTE: The mini-USB cable must be connected from the PC to the projector before moving on to the next step.

- (5) The following sequence must be performed on the projector's control panel. Set the projector to Download Mode by holding down both the **“Power”** and **“Enter”** buttons on the projector's control panel while inserting the power cable.

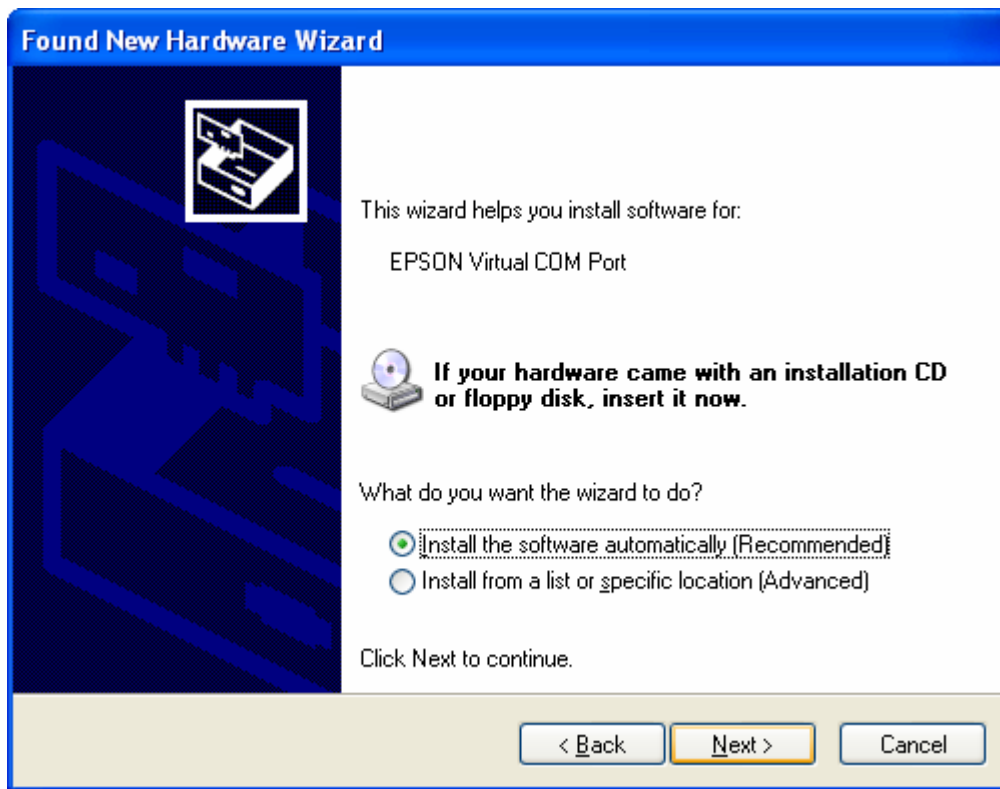
You can confirm the projector is in Download Mode when the **“Power Button & Operation Indicator”** LED's are lit **blue** and the **“Temp”** LED is lit **orange**.



- (6) After you power on the projector in Download Mode with the mini-USB cable connected, the **“Found New Hardware Wizard”** should start. Select, **“No, not this time”** and click **“Next.”**

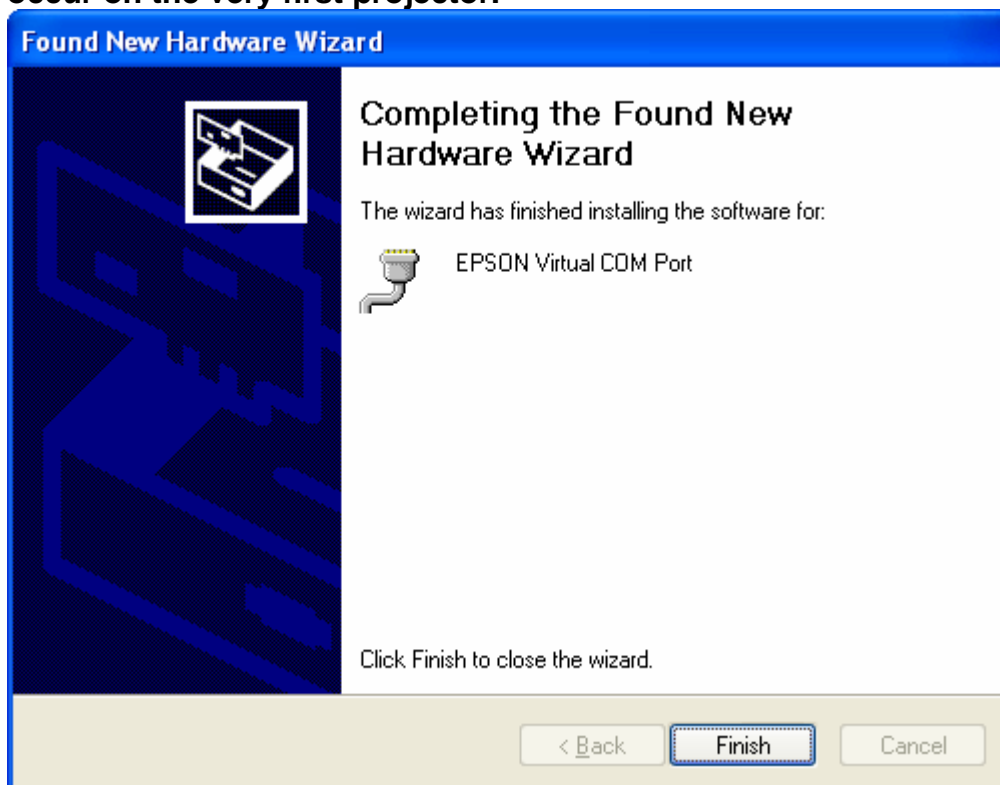


Then Select **“Install the software automatically (Recommended)”** and click **“Next.”**



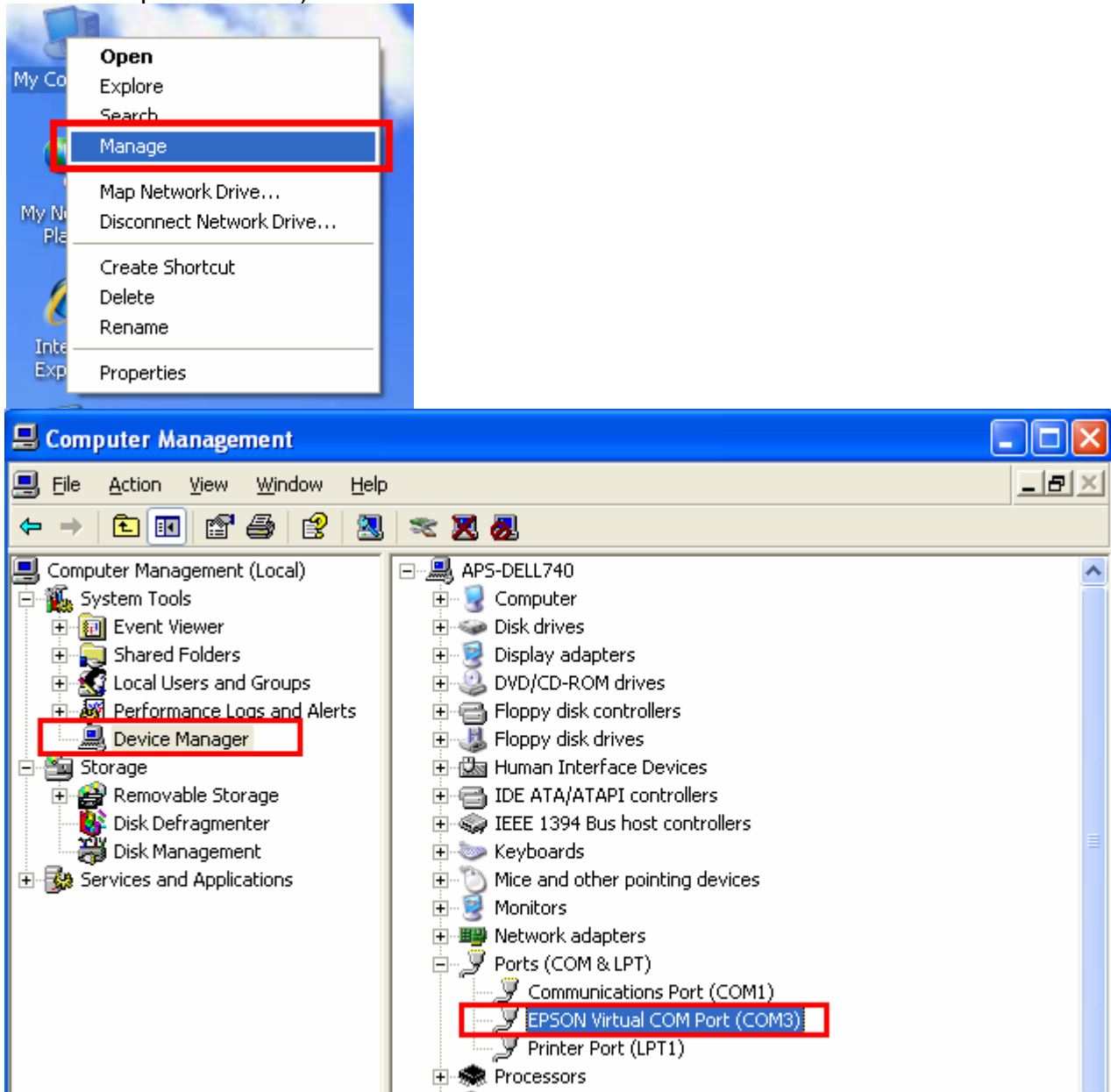
The driver files should load automatically, at the end, you should see the following final screen and the “**EPSON Virtual COM Port**” driver should now be installed, click “**Finish.**”

NOTE: If upgrading more than 1 projector, the “Found New Hardware Wizard” will only occur on the very first projector.



(7) Next confirm that the Projector's USB Port shows up in the Device Manager as an EPSON Virtual COM Port. Do the following:

- From the Desktop, right click on the **"My Computer"** Icon and select **"Manage"** this will open the Computer Management window.
- Select **"Device Manager"** in the left column, in the right column, click on the **"+"** next to **"Ports (COM & LPT)"** to expand the list and verify that the **"EPSON Virtual COM Port (COMx)"** is showing.
- This indicates that the PC sees the Projector's USB port as a virtual serial port and that the projector is properly set to **"Download Mode."** (NOTE: the **"x"** can be any number representing the virtual COM port number.)



NOTE: You can also get to the Device Manager through the Control Panel.

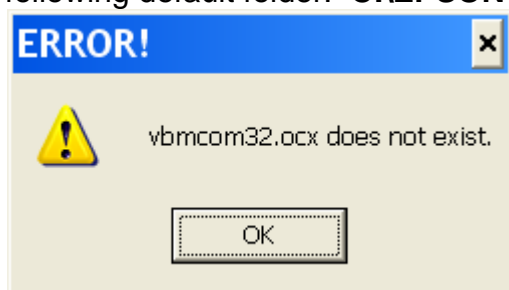
- From the Start button select **"Control Panel"** or Settings > Control Panel, in the Control Panel window select **"System."**
- In the System Properties window select the **"Hardware"** Tab at the top, and then click the **"Device Manager"** button.
- Verify that **"EPSON Virtual COM Port (COMx)"** is showing under **"Ports (COM & LPT)"** The **"x"** can be any number representing the Virtual COM port number.

NOTE: If the EPSON Virtual COM Port (COMx) does not show up in the Device manager, verify the mini-USB cable is properly connected at both ends (see Step 4 above), verify the projector is in “Download mode” (see Step 6 above.) Finally verify “EMPUSB2Setup.exe” was properly installed by running the installer. If it was properly installed, the Installer will ask if you want to completely remove the utility, click “Cancel” to quit the removal, or click “OK” to remove. If the utility is removed, then run the Installer once again to reinstall it.

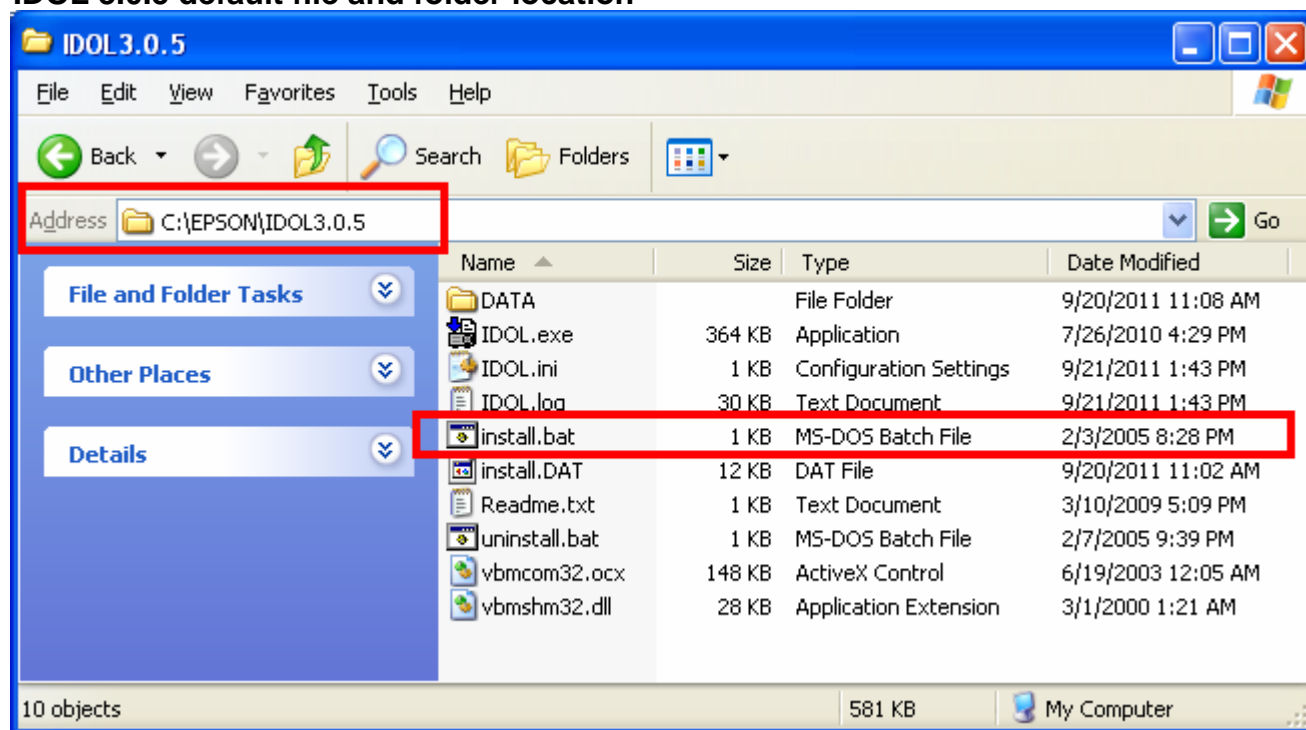
NOTE: If upgrading more than 1 projector, the “Found New Hardware Wizard” will only occur on the very first projector. If there are no setting changes on the hardware then the EPSON Virtual COM Port (COMx) setting should not need to be verified again.

RUN IDOL 3.05

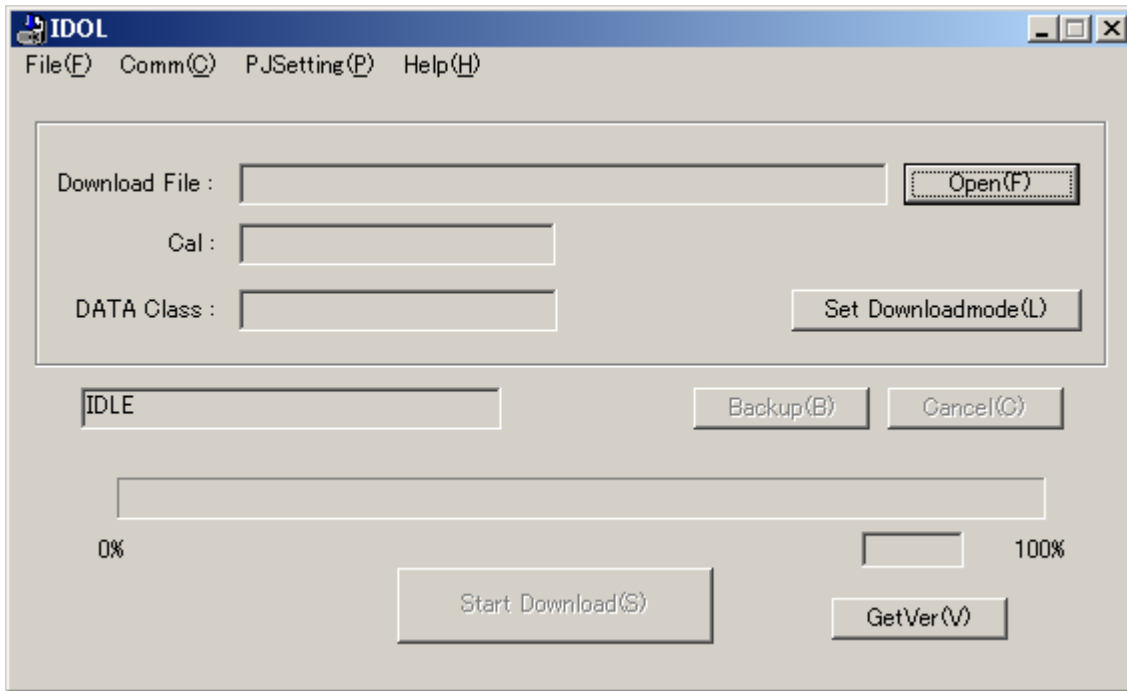
Note: To prevent the “vbmcom32.ocx does not exist,” error message when launching IDOL, open Windows Explorer, look for, and run the “Install.bat” (MS-DOS Batch File) file located in the following default folder: **C:\EPSON\IDOL3.0.5**



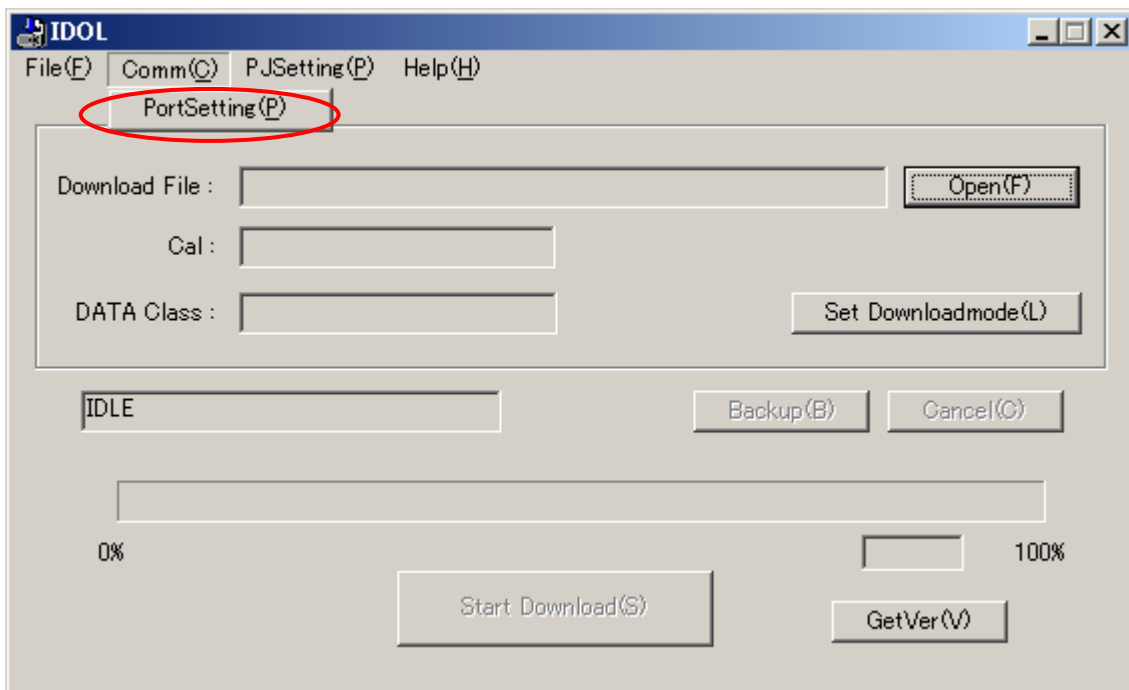
IDOL 3.0.5 default file and folder location



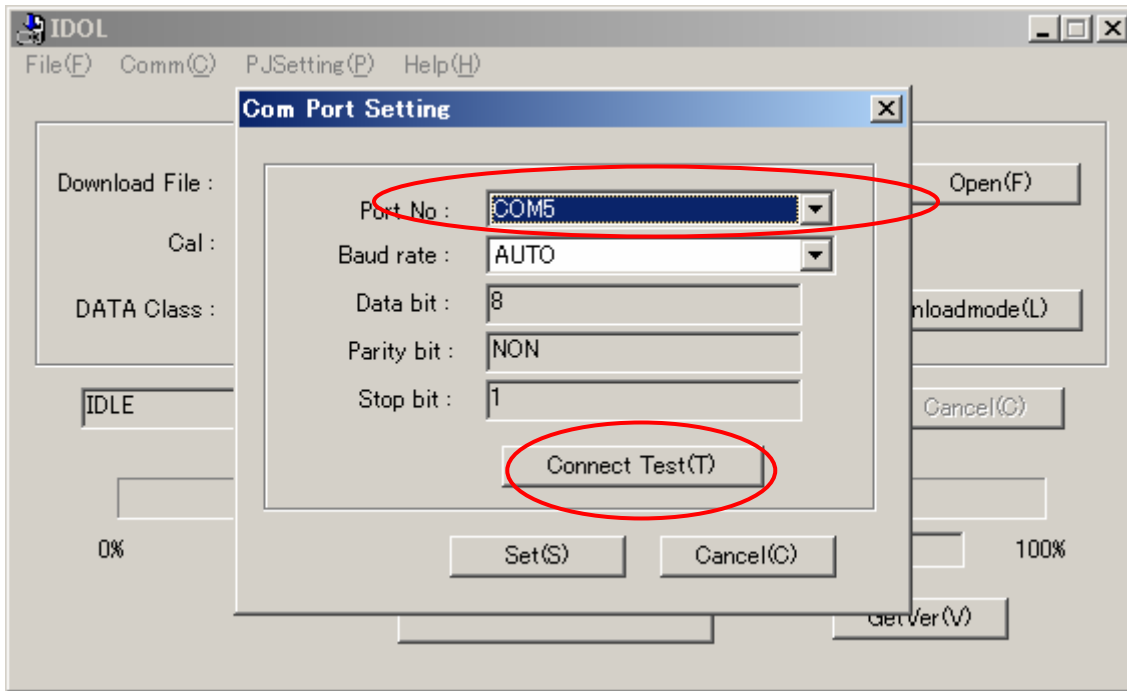
- (8) Execute “IDOL” from the either the **Desktop Icon** or from the Start menu on the PC.
Click **Start > All Programs > EPSON > IDOL**
After “IDOL” starts, the following screen is shown.



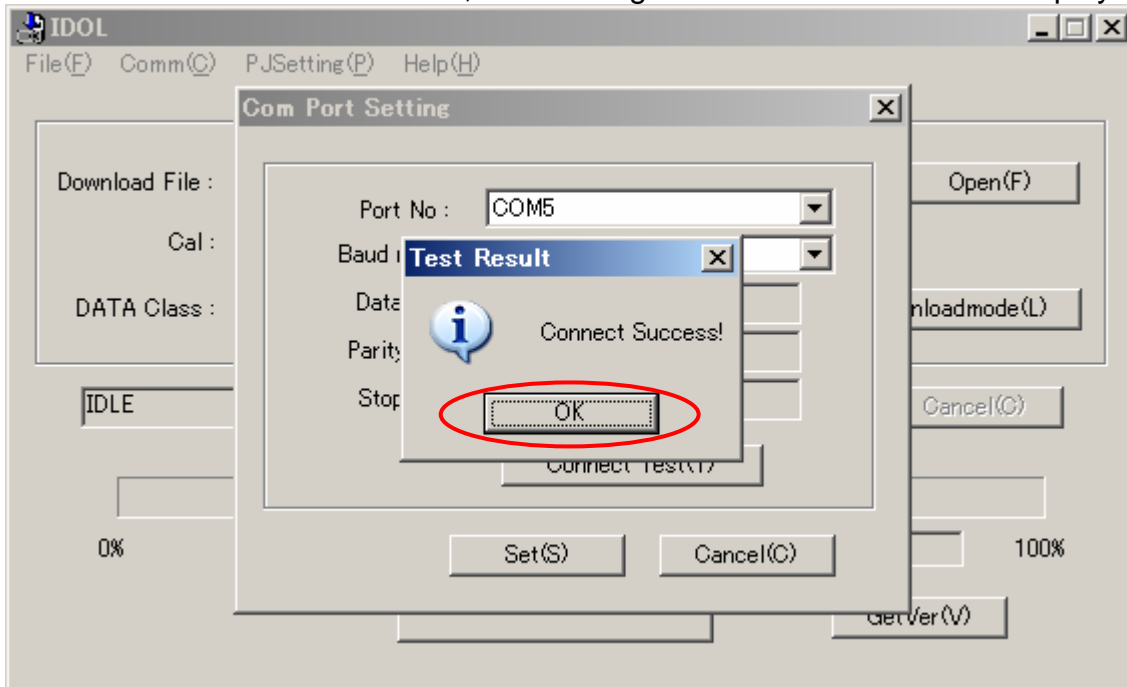
- (9) In IDOL, click the **Comm(C)** pull down menu and select “**Port Setting(P)**.” Make sure that the port number is the same COM Port that was verified in the Device Manager under “**Ports (COM & LPT)**”



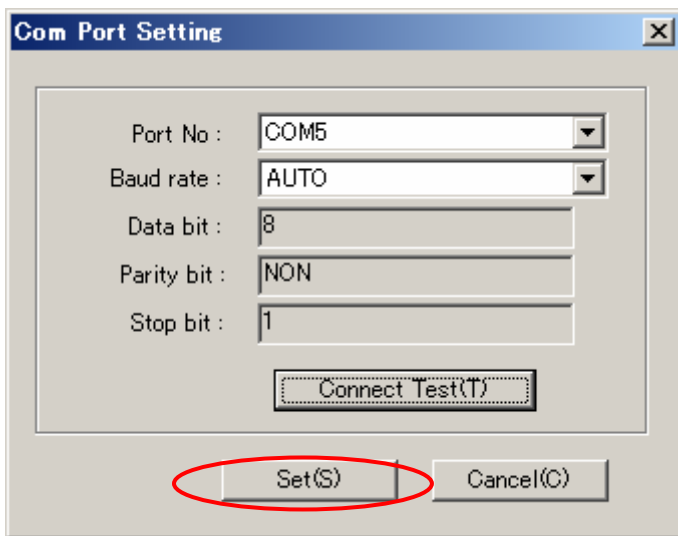
- (10) You can confirm whether a connection between the PC and the projector is established by clicking the “**Connect Test(T)**” button.



- (11) When the connection is established, the message “**Connect Success**” is displayed.



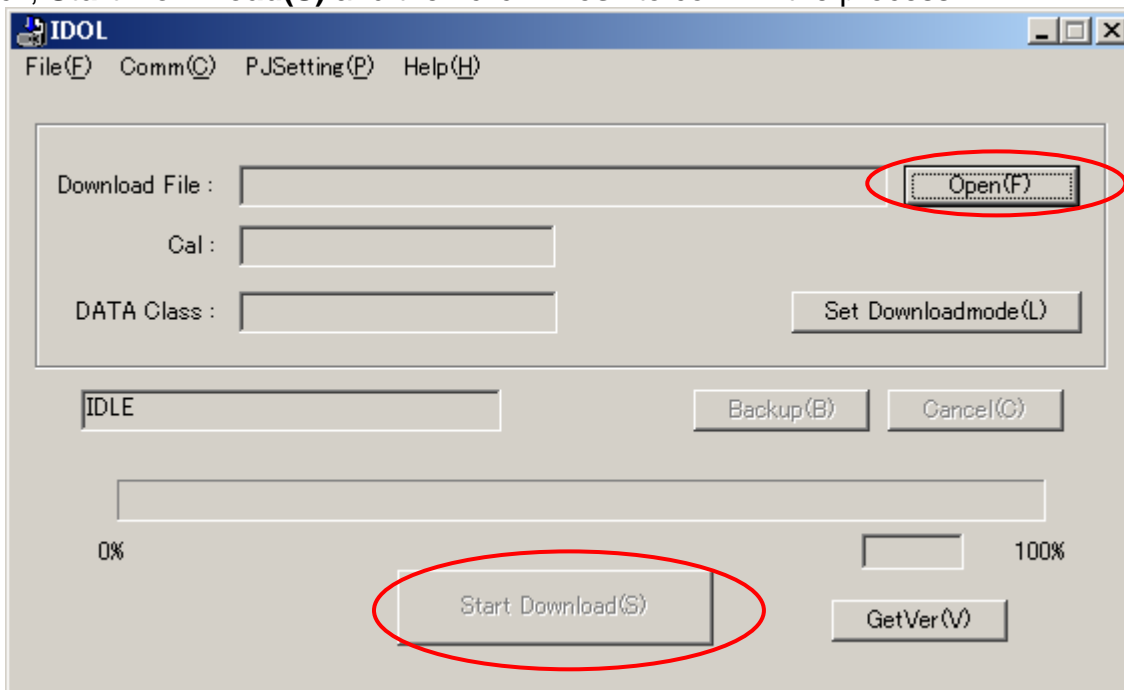
- (12) When this message is displayed, click **OK**, then **Set(S)** to set the port, and click “**Yes**” to confirm the setting.



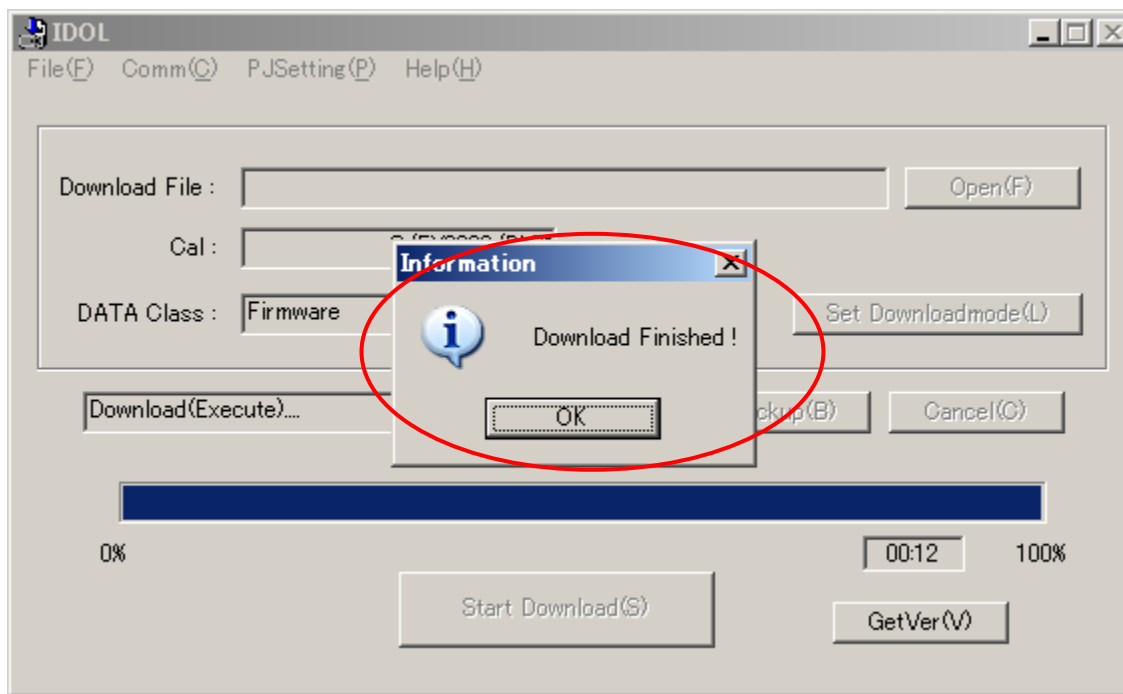
- (13) Click **Open** and navigate to the Desktop to select the file “**HB1-L2-FWWWV113-r31251_AS.DLT.**”

CAUTION: MAKE SURE THAT THE CABLES DO NOT POSE A TRIPPING HAZARD IN THE WORK AREA. USE CARE TO AVOID ACCIDENTALLY UNPLUGGING THE USB CABLE OR THE PROJECTOR'S POWER CABLE DURING THE FIRMWARE UPGRADE PROCESS. IF THE UPGRADE PROCESS IS INTERRUPTED, IRRECOVERABLE DAMAGE MAY OCCUR TO THE PROJECTOR'S MAIN BOARD AND THE PROJECTOR WILL NEED TO BE REPAIRED.

- (14) Click, **Start Download(S)** and then click “**Yes**” to confirm the process.



- (15) Although the status bar of download does not show any progress immediately after start of downloading, the simultaneous flashing or Blinking of all 3 indicator lights (**Power Button / Operation Indicator** and **Temp**) on the projector indicates that the download is being executed normally. After a while, the status bar starts showing the progress of the download. This version should take about 1 minute to install.
- The following screen is shown when the download has completed normally: Click “**OK**”



NOTE: Before moving on to the next step, YOU MUST unplug the power cord from the projector for 10 seconds after you successfully completing the Firmware Update.

CONFIRM THE FIRMWARE VERSION

Turn the projector back on, reconnect the power cord and turn on the projector by pressing **Power ON** button on the control panel or the Remote.

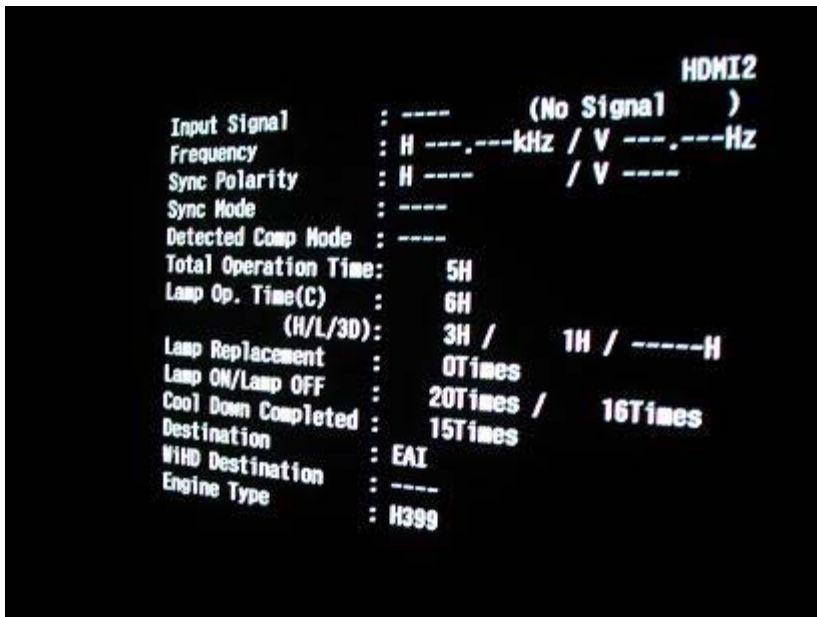
- Wait for it to be in a “ready” mode with a solid blue **Operation Indicator**.

NOTE: When first connected to power the projector’s 3 indicator lights may flash or blink rapidly, this is normal after being in Download mode and after a Firmware update.

The After Service (AS) menu can be viewed using the following button sequence:

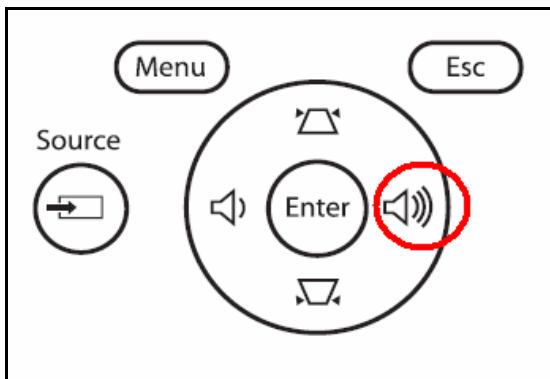
- Press and hold the **Menu** button on the remote control or on the projector’s control panel for at least **8** seconds, then release
- Within **4** seconds of releasing the Menu button: Press and release the ESC button twice, (Esc + Esc)

The following AS menu should appear in the center of the displayed image:

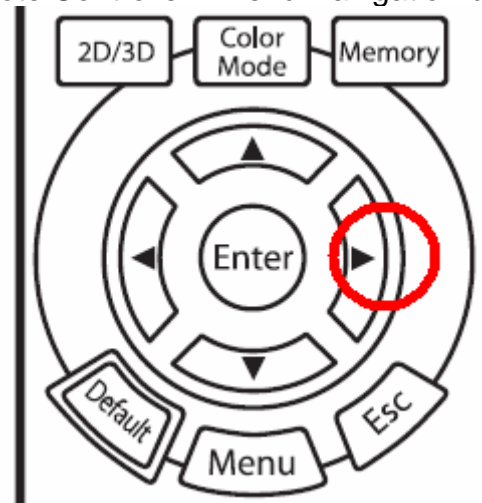


Then either on the Remote controller or Projector's control panel; press the "Right" directional button once on the 4-way Menu Navigation buttons (marked as the "**Volume up**" on the Projector's Control panel) to get to the AS menu "**Versions**" screen shown below:

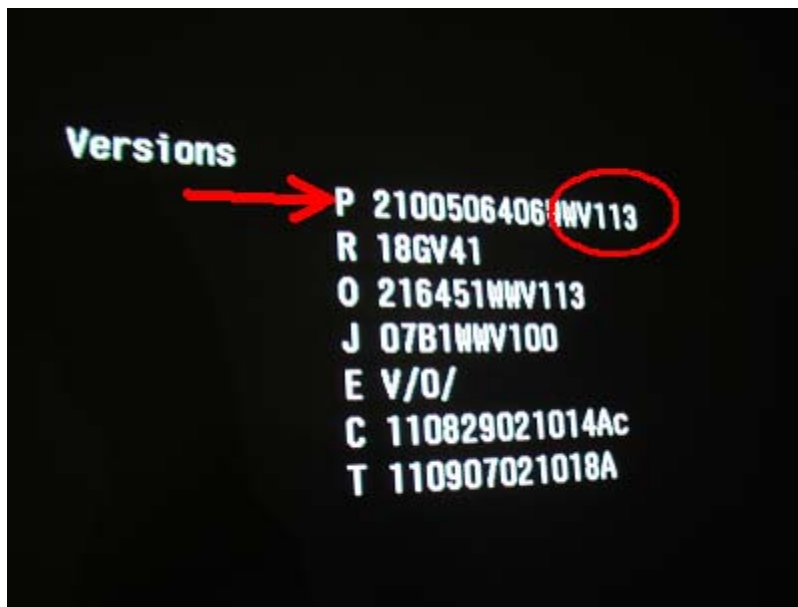
Control Panel - Menu Navigation buttons



Remote Controller - Menu Navigation buttons



- 1) Confirm the FW version is correct, look at the line that starts with the letter "**P:**" the last 3 digits of this string is the FW version and should be V113. See **RED** text in the example below:



PL HC 3010/3010e

P: 2100506406WWV113

R: 18GV41

O: 216451WWV113

- 2) If the firmware version is correct, you can power off the projector, and disconnect the USB cable. The Firmware update has been successfully installed.
- 3) If the firmware version is not V113, turn off the power switch for 1 minute and try to update the unit again. If after a second attempt to update is unsuccessful, please contact Epson Technical Support.